

**Cabinet Type**      **Full Height Glass Door**

**Model Designation**      **FDH**

**File Reference**      1222

<b>Document Issue</b>	1	28.05.12	LRC	Original Issue
	2	19-02-13	GR	Shelf Detail Added
	3	30-08-13	LRC	Changed flow rates on Glycol 30% to DTX Glycol 27%

cabinet **TECHNICAL DATA**

## Cabinet Technical Data Sheet – FDH

Product Type	Frozen Food 3L1
Product Temperature	-18°C / -22°C
Maximum Design Ambient	25°C 60%RH

Case Length [m]	4DR	3DR	2DR
-----------------	-----	-----	-----

### Refrigeration Data

Nett Environmental Cooling Effect	-0.19	-0.34	-0.09
Refrigerant Charge per System R1270	600g	550g	600g

### Electrical Data (individual loads 230v)

	Watts	Amps	Watts	Amps	Watts	Amps
Defrost Heaters	3800	16.5	2750	11.9	1700	7.4
Fans	28	0.12	21	0.09	14	0.06
Trim Heaters	688	2.99	464	2.02	344	1.49
Controller	10	0.04	10	0.04	10	0.04
Lights	390	0.76	140	0.61	105	0.46
Condensing unit	2568	11.2	1551	6.8	1284	5.58

### Electrical Data (@400V 3ph 50Hz)

	L1	L2	L3	L1	L2	L3	L1	L2	L3
Maximum Load – Electric Defrost	3.91	8.25	8.25	2.76	5.95	5.95	2.05	3.7	3.7

### Miscellaneous Data

Total Heat Rejection THR [KW]	5.01	3.63	2.51
Glycol Flow Rate [Kg/S]***	0.1842	0.1238	0.0921
Water inlet temperature		18°C	
Water outlet temperature		24°C	
Plate Heat Exchanger [Kpa] each	1 @ 7.5Kpa	1 @ 7.5 Kpa	1 @0.86Kpa
Drain Outlet		32mm Plastic	
Electrical Connections		Underside of Cabinet LHS	
Chilled Water Connections	22mm	22mm	22mm

### Set-Up Data\*\*

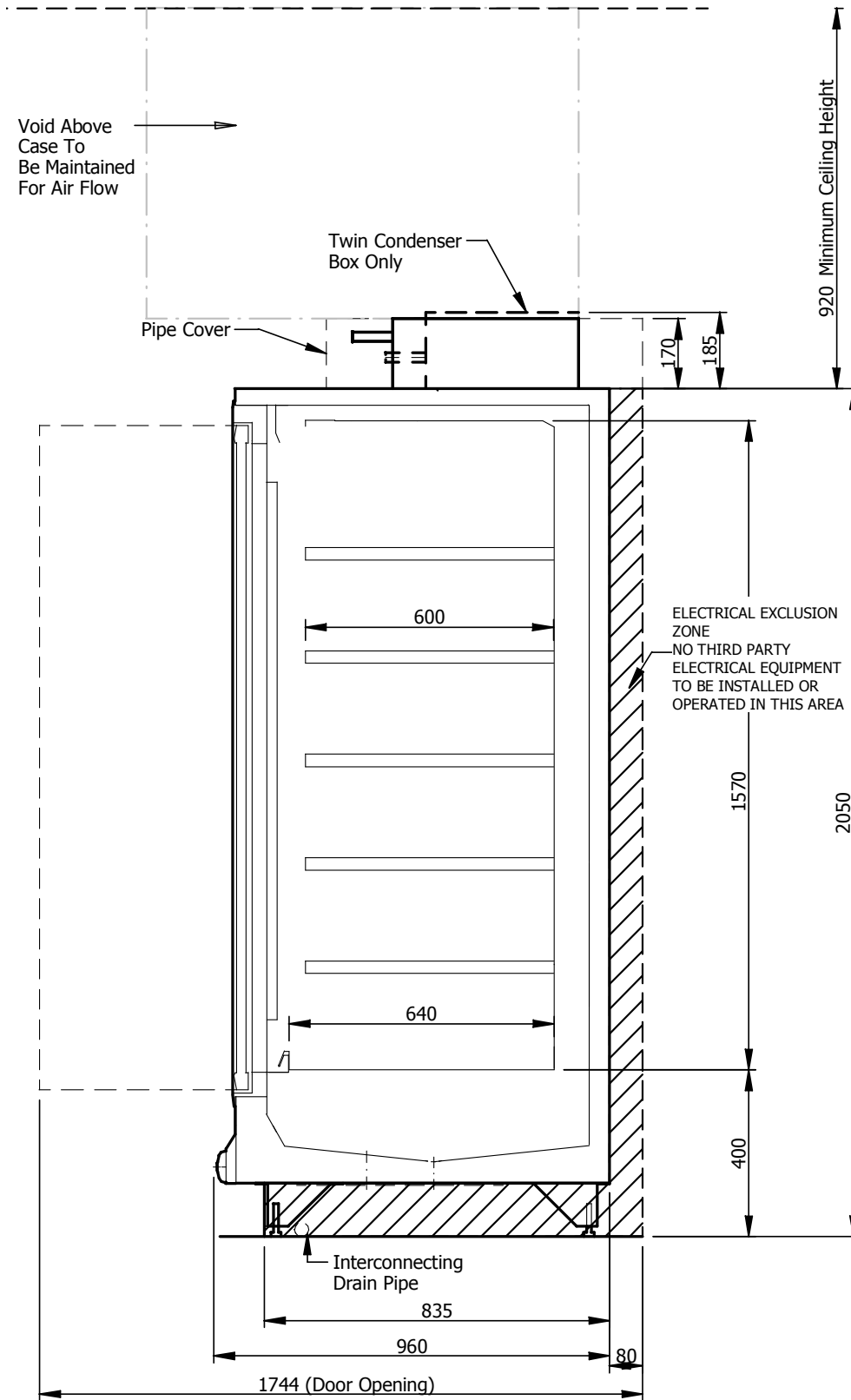
	Frozen	Ice Cream
Cut in Temperature [°C]	-22	-24
Differential [K]	2	2
Cabinet Temperature Ratio (%)	50	50
Anti Cycle Time [Seconds]	180	180
Lag Comp Delay [Seconds]	60	60
N° Defrosts (per 24hrs)	2	2
Maximum Defrost Time [mins]	45	45
Defrost Termination Temp [°C]	1	1
Drain Down Time [mins]	2	2
Fans in Defrost	Off	Off
Integral Control	Basic	Basic
Trim Heater Control (%)	60	60

NOTES! \* 12/12 Trading Conditions

\*\* Set-up data is for guidance only. Final settings to be determined by commissioning contractor.

\*\*\* Flow rate for Glycol based on 27% @ 20°C from ASHRAE = 3.8095 KJ/(KG-K)

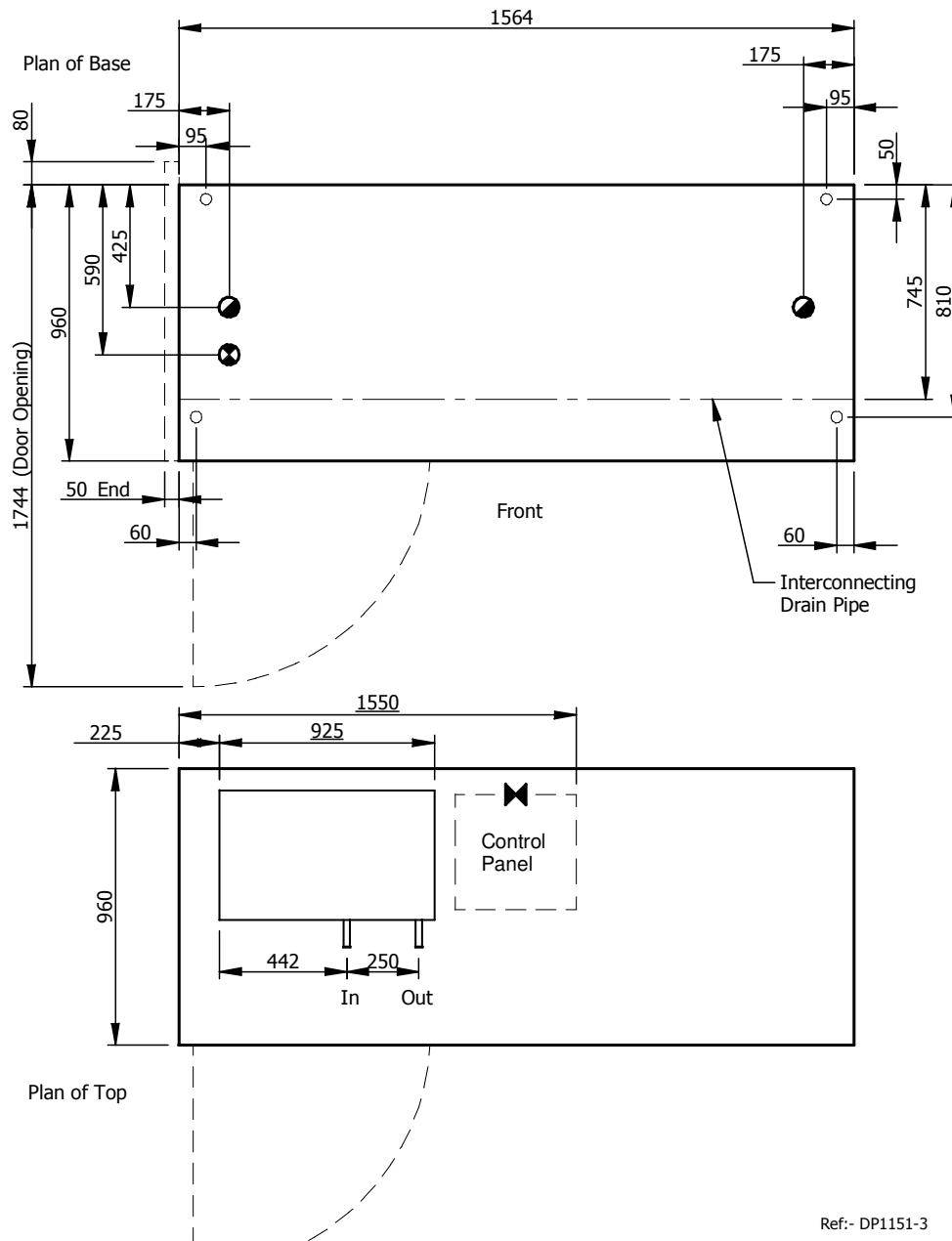
**Section Drawing – FDH**



Ref:- DS1151-03

**Plan Drawing – FDH**

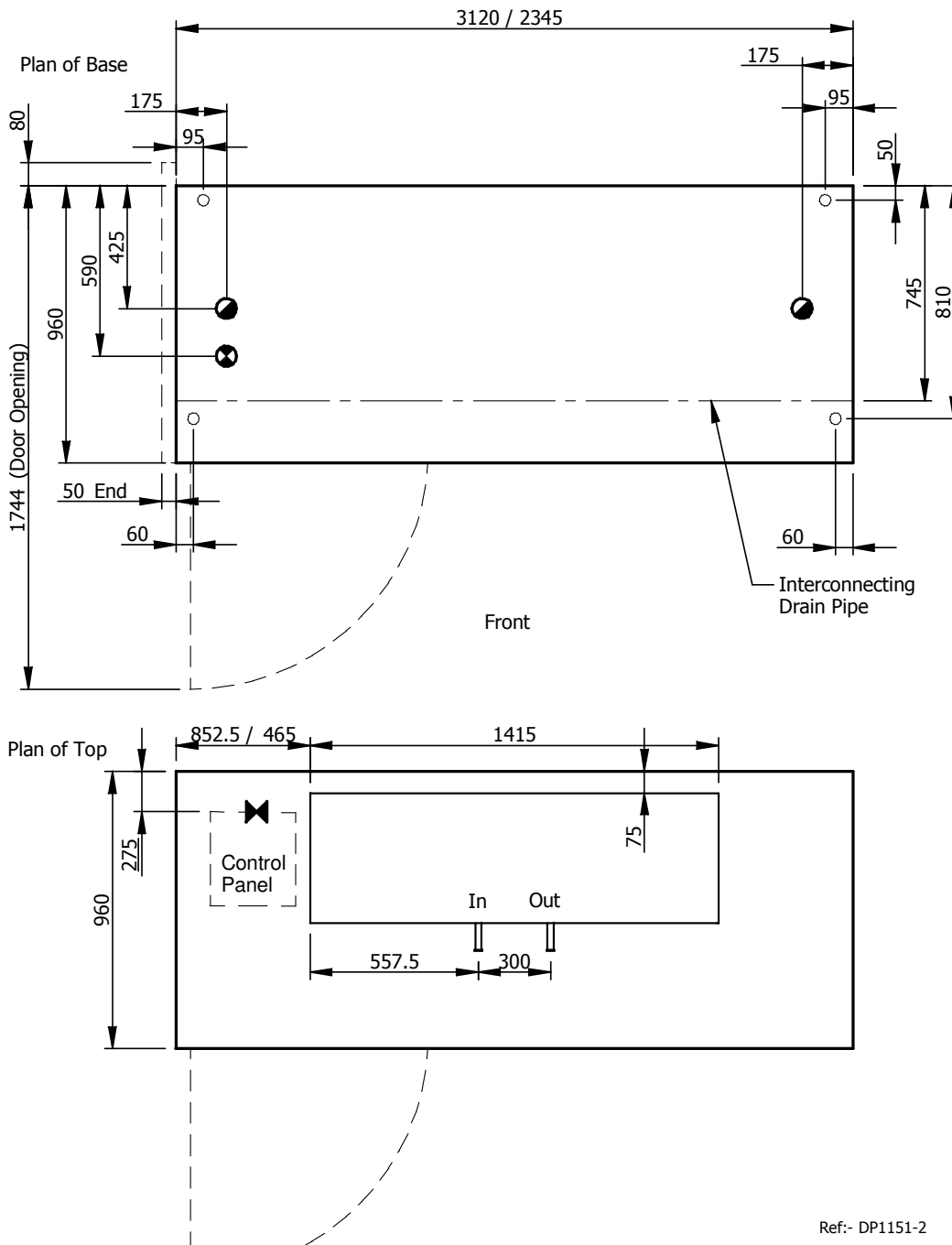
- KEY
- Feet Positions
  - Refrig. Outlet
  - ⊙ Drain Outlet
  - ⊗ Elect. Outlet
  - ⊕ Mains Supply



Ref:- DP1151-3

**Plan Drawing – FDH (Twin Condenser Box)**

- KEY
- Feet Positions
  - Refrig. Outlet
  - ◐ Drain Outlet
  - ⊗ Elect. Outlet
  - ⊗ Mains Supply



Ref:- DP1151-2