

Cabinet Type **Multideck Full Height**

Model Designation **ID9**

File Reference 1140

Document Issue	1	01.04.10	GR	Original Issue
	2	07.04.10	GR	WAE Case Details Added
	3	19.04.10	GR	1.7M WAE Case Details Added
	4	15.04.11	GR	500mm Shelf Size Added

cabinet **TECHNICAL DATA**

Cabinet Technical Data Sheet – ID9

Product Type	Meat 3M0
Product Temperature	-1 /+4 °C
Maximum Design Ambient	25°C @ 60% RH

Case Length [m]	3.75	2.50	1.87	1.7	1.25
------------------------	-------------	-------------	-------------	------------	-------------

Refrigeration Data

Nett Environmental Cooling Effect	1.91	0.78	0.96	0.96	0.39
Refrigerant Charge Per System R1270	650g	430g	650g	650g	470g

Electrical Data (@ 230V 50Hz)

	Watts	Amps	Watts	Amps	Watts	Amps	Watts	Amps	Watts	Amps
Fans (EC EBM)	42	0.18	28	0.12	21	0.09	21	0.09	14	0.06
Controller	10	0.04	10	0.04	10	0.04	10	0.04	10	0.04
Lights	114	0.50	76	0.33	54	0.23	54	0.23	38	0.17
Condensing unit	1910	8.3	1526	6.6	955	4.2	955	4.2	763	3.3
Maximum Load – Off Cycle Defrost	2076	9.0	1640	7.2	1040	4.5	1040	4.5	825	3.6

Miscellaneous Data

Total Heat Rejection THR [KW]	7.58	5.27	3.79	3.79	2.64
THR (Water only) [KW]	6.08	3.77	3.04	3.04	1.89
THR (Air only) [KW]	1.5	1.5	0.75	0.75	0.75
Plate Heat Exchanger [Kpa] each	2 @ 1.31	2 @ 1.31	1 @ 1.31	1 @ 1.31	1 @ 1.31
Water inlet temperature			18°C		
Water outlet temperature			24°C		
Glycol Flow Rate [Kg/S]***	0.2637	0.1632	0.1318	0.1318	0.0817
Water Flow Rate [Kg/S]****	0.2426	0.1504	0.1213	0.1213	0.0752

Drain Outlet	32mm Plastic
Electrical Conections	Bottom LHS
Chilled Water Conections	22mm

Cabinet Technical Data Sheet – ID9 WAE

Product Type	Meat 3M0
Product Temperature	-1 /+4 °C
Maximum Design Ambient	25°C @ 60% RH

Case Length [m]	1.87 WAE	1.7 WAE
------------------------	-----------------	----------------

Refrigeration Data

Nett Environmental Cooling Effect	0.96	0.96
Refrigerant Charge Per System R1270	650g	650g

Electrical Data (@ 230V 50Hz)

	Watts	Amps	Watts	Amps
Fans (EC EBM)	21	0.09	21	0.09
Trim Heaters	30	0.13	30	0.13
Controller	10	0.04	10	0.04
Lights	54	0.23	54	0.23
Condensing unit	955	4.2	955	4.2
Maximum Load – Off Cycle Defrost	1070	4.7	1070	4.7

Miscellaneous Data

Total Heat Rejection THR [KW]	3.79	3.79
THR (Water only) [KW]	3.04	3.04
THR (Air only) [KW]	0.75	0.75
Plate Heat Exchanger [Kpa] each	1 @ 1.31	1 @ 1.31
Water inlet temperature	18°C	
Water outlet temperature	24°C	
Water Flow Rate [Kg/S]	0.1213	0.1213
Glycol Flow Rate [Kg/S]	0.1318	0.1318
Drain Outlet	32mm Plastic	
Electrical Connections	Bottom LHS	
Chilled Water Connections	22mm	

Set-Up Data** O/C Defrost

	Meat 3.75 & 2.50	Meat 2.18, 1.87, 1.7 & 1.25
Cut in Temperature [°C]	4	4
Differential [K]	2	2
Anti Cycle Time [Seconds]	180	180
Lag Comp Delay [Seconds]	180	0
Cabinet Temperature Ratio (%)	40	40
N° Defrosts (per 24hrs)	8	8
Maximum Defrost Time [mins]	45	45
Defrost Termination Temp (air off) [°C]	8	8
Drain Down Time [mins]	1	1
Fans in Defrost	On	On
Integral Control	Basic	Basic

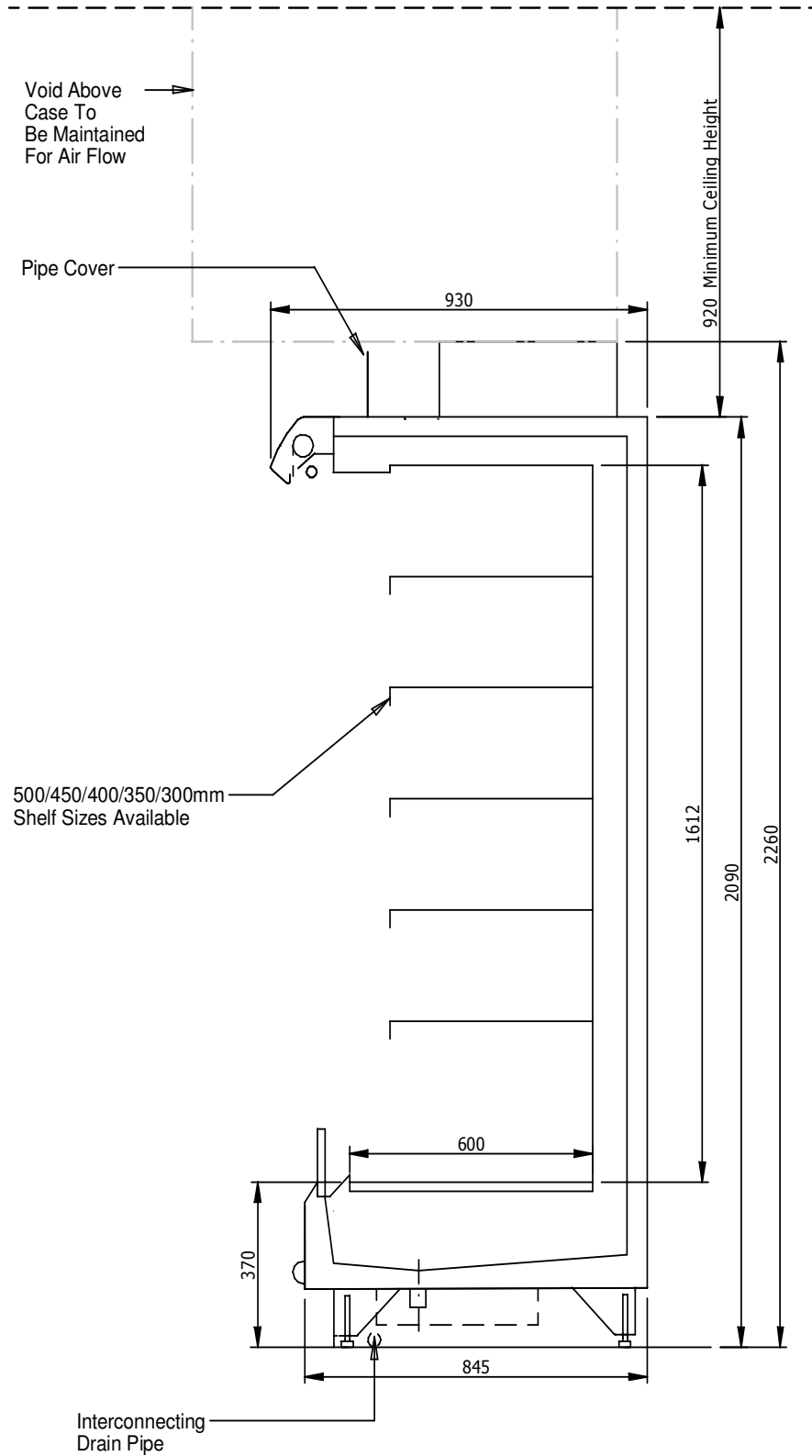
NOTES! * 12/12 Trading Conditions

** Set-up data is for guidance only. Final settings to be determined by commissioning contractor.

*** Flow rate for Glycol based on 30% @ 20°C from ASHRAE = 3.848 KJ/(KG-K)

**** Flow rate for water @ 20°C (http://www.engineeringtoolbox.com/water-thermal-properties-d_162.html)

Section Drawing – ID9

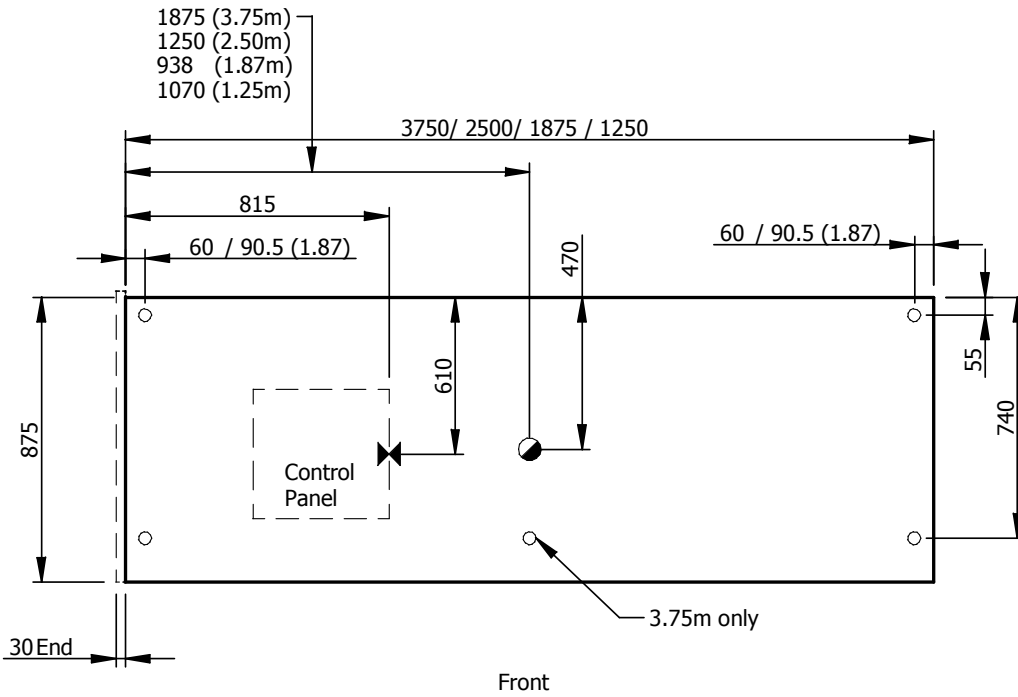


Ref:- DS1140

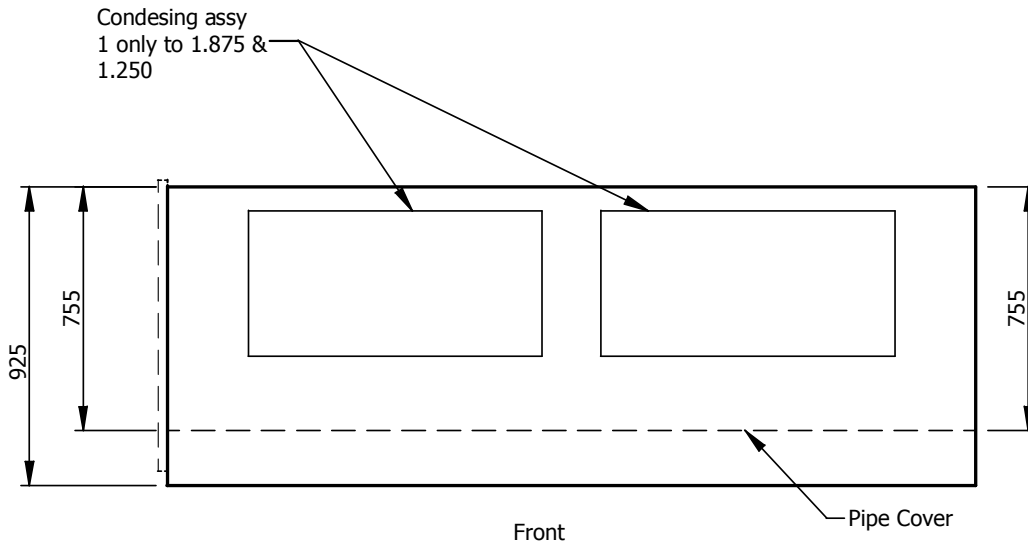
Plan Drawing – ID9

KEY

- Feet Positions
- Refrig. Outlets
- ✕ Refrig Pipe Tails
- ⊙ Drain Outlets
- ⊕ Mains Supply



Plan of Base



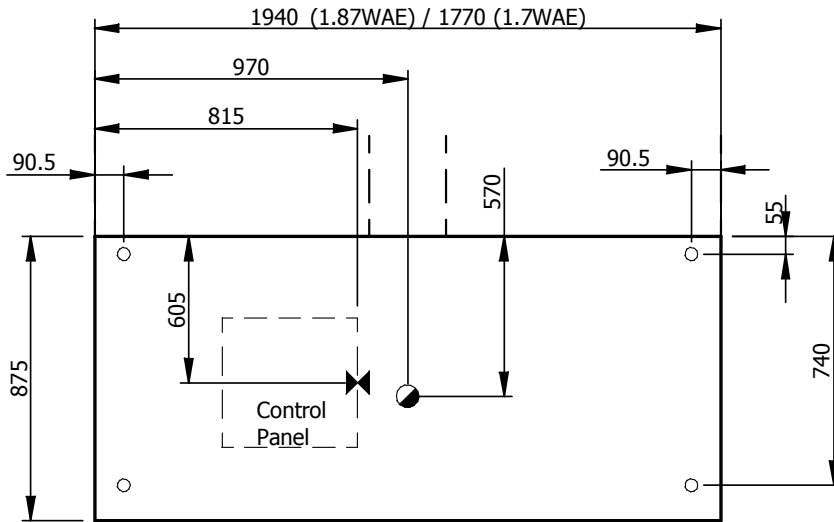
Plan of Top

Ref DP1140-1

Plan Drawing – ID9 WAE

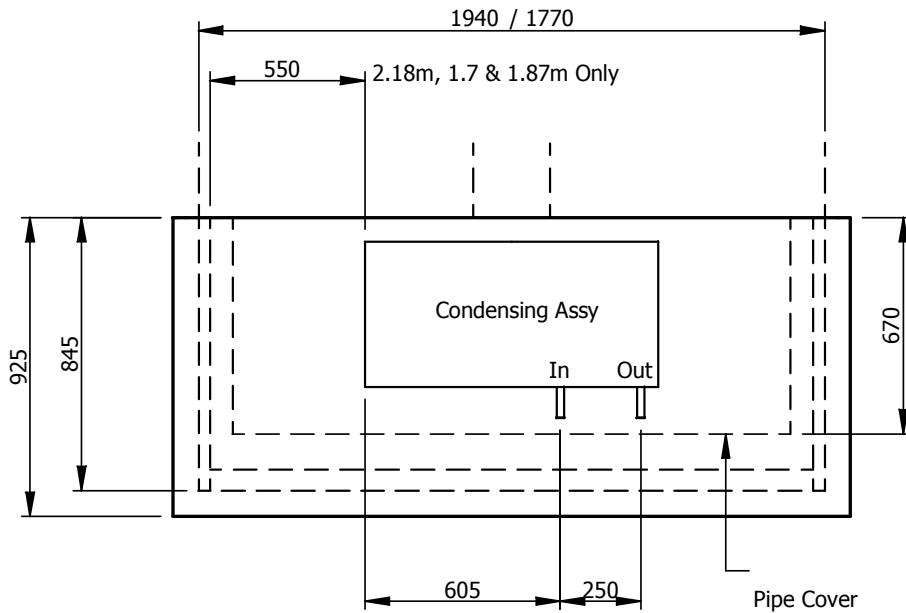
KEY

- Feet Positions
- Refrig. Outlets
- ✕ Refrig. Pipe Tails
- ◐ Drain Outlets
- ⊗ Elect. Outlets
- ⊗ Mains Supply



Plan of Base

Front



Plan of Top

Front

Ref:- DW1140