

Case Type	Low Height Multideck			
Model Designation	NE1			
File Reference	1203			
Document Issue	1	26-04-12	LRC	First Issue
	2	11-09-12	LRC	Updated 1.25m information.

cabinet **TECHNICAL DATA**

Cabinet Technical Data Sheet – NE1 Meat

Product Type	Meat 3M0
Product Temperature	-1/+4°C
Maximum Design Ambient	25°C @ 60%RH

Case Length [m]	3.75	2.50	1.87	1.5	1.25
-----------------	------	------	------	-----	------

Refrigeration Data

Refrigeration Duty (per 24hrs) [kW]	4.44	2.96	2.22	1.77	1.49
Evaporating Temperature [°C]	-6	-6	-6	-6	-6
Nett Environment Cooling Effect [kW]		1.73	1.29		0.87
R407A AKV Expansion Valve Size	10-5	10-4	10-3	10-3	10-3
R407A T2 Orifice Size	3	2	2	1	1
R404A AKV Expansion Valve Size	10-5	10-4	10-4	10-3	10-3
R404A T2 Orifice Size	4	3	2	1	1
Evaporator Liquid Capacity @ 25% R404A* [kg]	4.02	2.68	2.09	1.60	1.64
Refrigeration Pipe Tail – Liquid	3/8"	3/8"	3/8"	3/8"	3/8"
Refrigeration Pipe Tail – Suction	7/8"	7/8"	7/8"	7/8"	7/8"

Electrical Data (@ 230V 50Hz)

	Watts	Amps	Watts	Amps	Watts	Amps	Watts	Amps	Watts	Amps
Fans (EC EBM)	42	0.28	28	0.12	21	0.09	21	0.09	14	0.06
Solenoid Valve / Controller	10	0.04	10	0.04	10	0.04	10	0.04	10	0.04
Canopy Lights	180	0.78	120	0.52	72	0.31	48	0.21	60	0.26
Maximum Load – Off Cycle Defrost	232	1.1	158	0.68	103	0.44	79	0.34	84	0.36

Miscellaneous Data

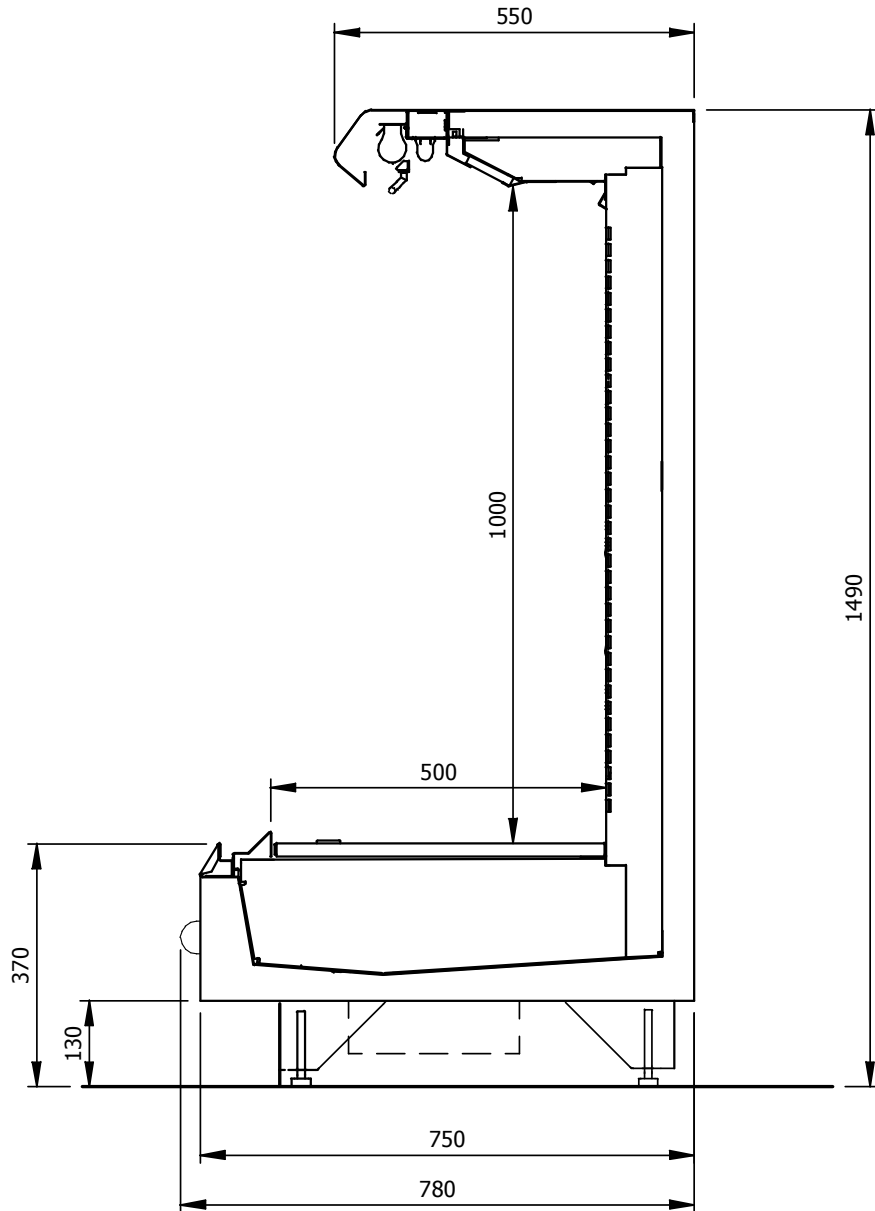
Drain Outlet	32mm Plastic
Refrigeration Connections	Underside of Cabinet LHS
Electrical Connection	Underside of Cabinet LHS

Set-Up Data**

	Meat	Dairy
Cut in Temperature [°C]	3.0	4.0
Differential [K]	1.0	1.0
N° Defrosts (per 24hrs)	8	8
Maximum Defrost Time [mins]	45	45
Defrost Termination Temp (air off) [°C]	7	7
Drain Down Time [mins]	01:30	01:30
Fans in Defrost	On	On
Cabinet Temperature Ratio (%)	50	50
Superheat [K]	6	6

NOTES! * for R22 multiply by factor X 0.90
** Set-up data is for guidance only. Final settings to be determined by commissioning contractor.

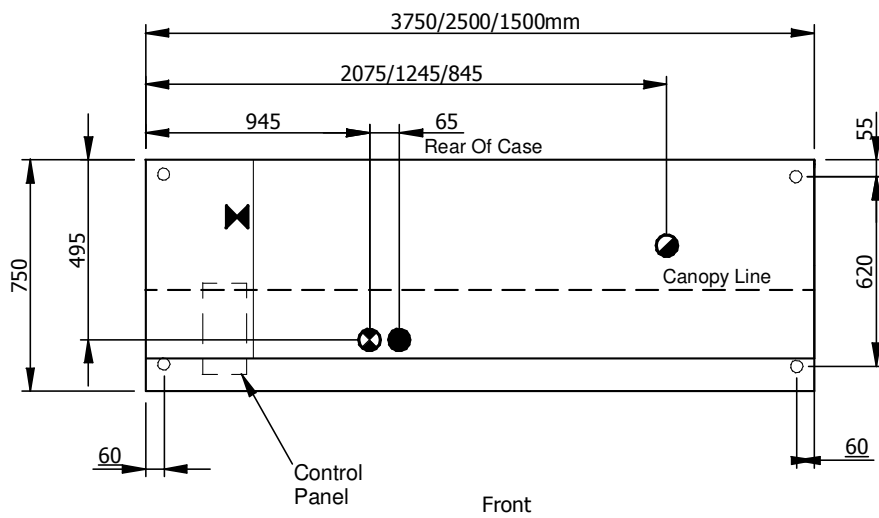
Section Drawing – NE1



Ref:- DS1203

Plan Drawing – NE1

- KEY
- Feet Positions
 - Refrig. Outlet
 - ◐ Drain Outlet
 - ⊗ Elect. Outlet
 - ⊗ Mains Supply



Plan of Base

Ref:- DP1203