

Technical Data Document

Model designation **SD9**
File reference **1015**
Document issue **Iss 1** 13.01.04 Irg



CASE TECHNICAL DATA SHEET

SD9 1015

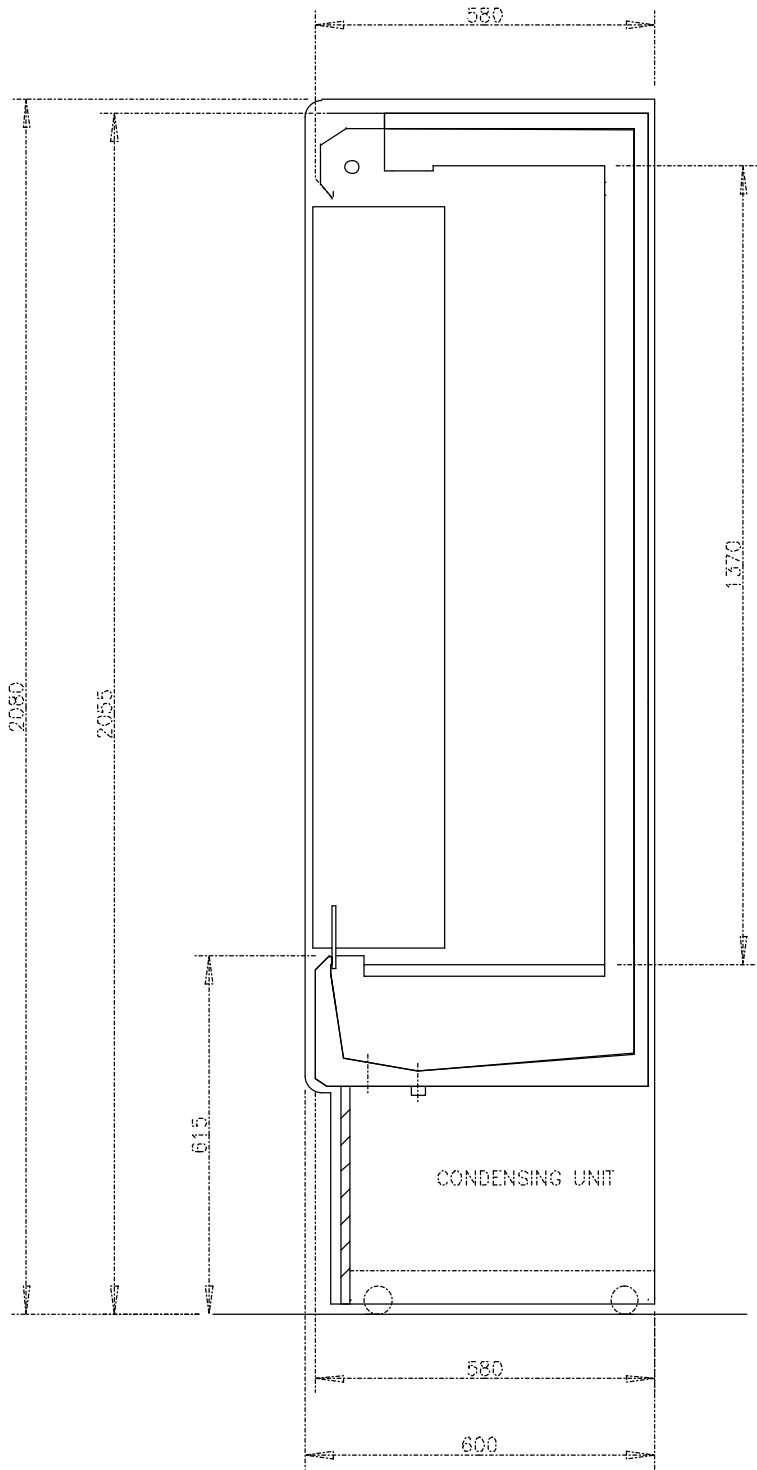
Product Type / Product Class	Dairy / 3M1
Product Temperature	+5 °C
Maximum Design Ambient	25°C 60%rH

Case Length	990	1490	
--------------------	------------	-------------	--

Electrical Data @ 230V 50Hz	Watts	Amps	Watts	Amps	Watts	Amps
Defrost Heater	900	3.78	1300	5.46		
Fans (Evap & Cond)	163	.66	440	1.84		
Trim Heaters						
Misc			300	1.26		
Lights	35	.15	40	.16		
Compressor	750	3.15	1180	5.46		
Maximum Load	1098	4.60	2080	8.7		

Miscellaneous Data	
Total Heat Rejection (THR) watts	2500 3600
Drain Outlet	Self evaporative

Set-up Data**	Elec Defrost
Set Point (°C)	1
Temp Differential (K)	5
Probe Offset	7
Max Setpoint	8
Min Setpoint	-10
Compressor Rest Time	2 min
N° Defrosts per 24hrs	6
Defrost Termination Temp (Air off °C)	10
Defrost termination Time	20
Defrost Type	0
Drain Down Time (mins)	1
Fan Delay	0
Recovery Time	15
Fan Delay Term Temp	0
High Temp Alarm	10
High Temp Alarm Offset	15
Alarm Delay	30

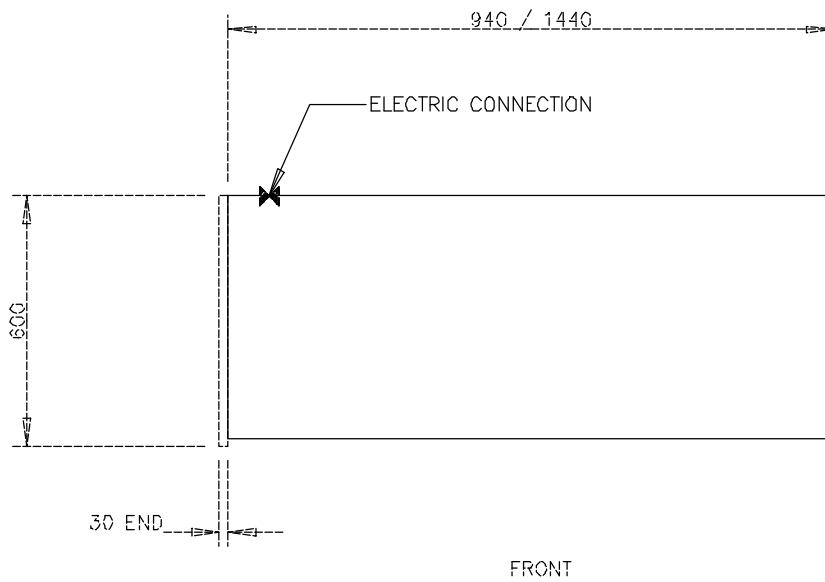


REF: DS1015-1

CUSTOMER

MODEL
SD9

CARTER RETAIL EQUIPMENT LTD.
TALBOT WAY BIRMINGHAM B10 0HJ
TEL 0121 250 1000 FAX 0121 250 1090



K01DP1015-1

CUSTOMER

MODEL

SD9 - PLAN

CARTER RETAIL EQUIPMENT LTD.
TALBOT WAY BIRMINGHAM B10 0HJ
TEL 0121 250 1000 FAX 0121 250 1090