

Case Type

Well Case

Model Designation

WA1

File Reference

1011

Document Issue

1	12.08.03	IRG	First Issue
2	21.04.05	IRG	TEV Orifice Sizes Added
3	14.12.05	GWP	New Format
4	10.03.05	AG	Drain Connection revised was 1& 1/2"
5	18.01.13	LRC	Updated 3 phase loading.

cabinet **TECHNICAL DATA**

Cabinet Technical Data Sheet – WA1 Frozen Food

Product Type Frozen Food / 3L1
 Product Temperature -18°C
 Maximum Design Ambient

Case Length [m]	3.75	2.50	WAE
-----------------	------	------	-----

Refrigeration Data

Refrigeration Duty (per 24hrs) [kW]	1.3	0.87	1.0
Evaporating Temperature [°C]	-34	-34	-34
Nett Environment Cooling Effect [kW]	0.9	0.6	0.66
R404a AKV Expansion Valve Size	No4	No3	No2
R404a T2 Orifice Size	No2	No1	No1
Evaporator Liquid Capacity @ 25% R404a* [kg]	2.33	1.49	1.05
Refrigeration Pipe Tail – Liquid	3/8"	3/8"	3/8"
Refrigeration Pipe Tail – Suction	5/8"	5/8"	5/8"
Refrigeration Pipe Tail – Defrost (if app.)	1/2"	1/2"	1/2"

Electrical Data (@ 230V 50Hz)

	Watts			Amps			Watts			Amps		
Defrost Heaters	2900	12.61	1930	8.39	1590	6.9						
Fans	81	0.35	54	0.23	54	0.23						
Trim Heaters	315	1.36	210	0.91	280	1.22						
Solenoid Valve / Controller	10	0.04	10	0.04	10	0.04						
Maximum Load – Electric Defrost	3306	14.36	2204	9.57	1934	8.4						
Maximum Load – Gas Defrost	406	1.75	274	1.18	344	1.5						
	L1	L2	L3	L1	L2	L3	L1	L2	L3			
Watts	406	1450	1450	274	965	965	344	795	795			
Amps	1.75	6.3	6.3	1.2	4.2	4.2	1.5	3.45	3.45			

Miscellaneous Data

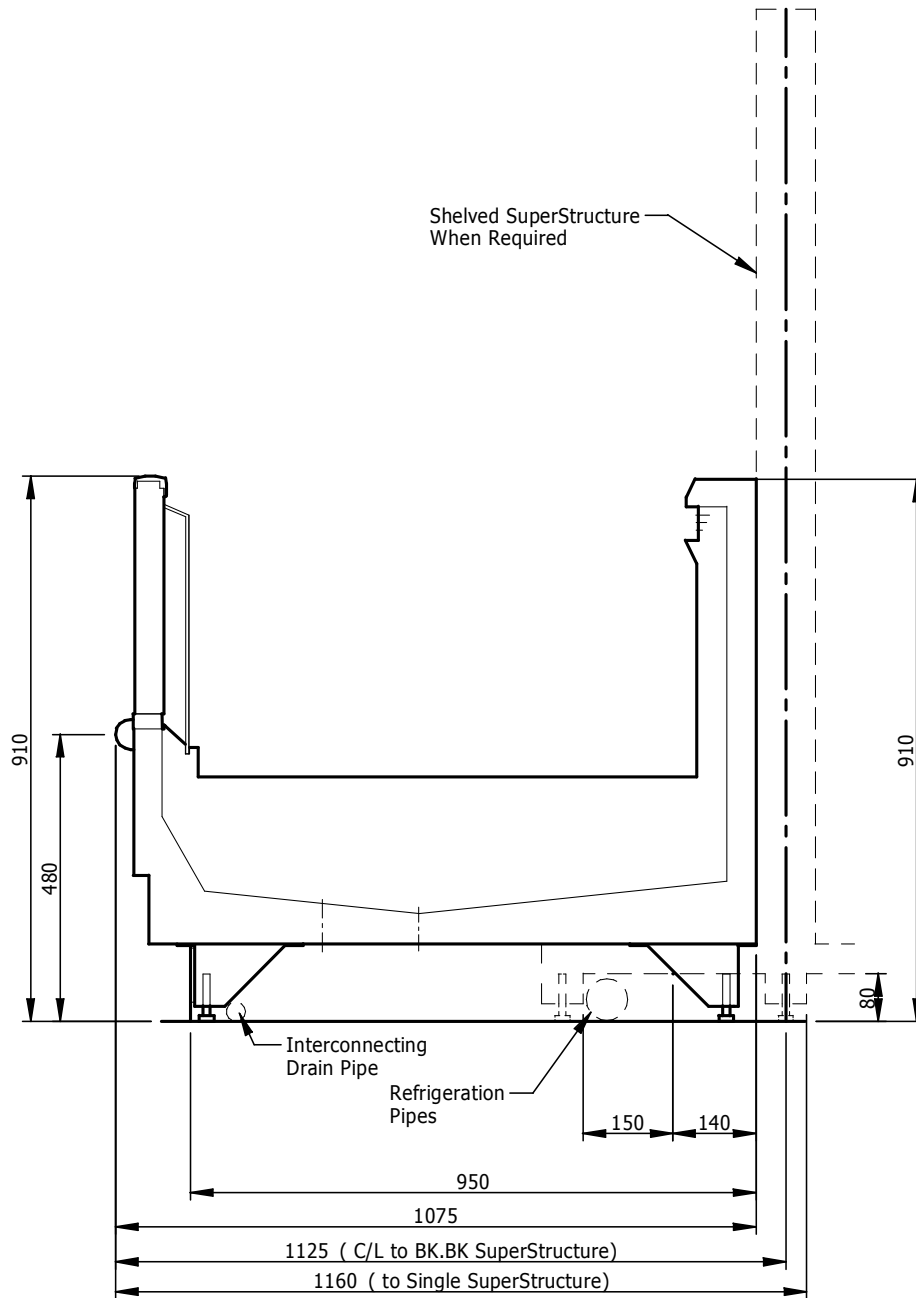
Drain Outlet	1&1/4"plastic x2
Refrigeration Connections	Bottom LHS
Electrical Connection	Bottom LHS

Set-Up Data**

	Electric Defrost	Gas Defrost
Cut in Temperature [°C]	-24	-24
Differential [K]	2	2
N° Defrosts (per 24hrs)	3	3
Maximum Defrost Time [mins]	45	20
Defrost Termination Temp (air off) [°C]	8	14
Drain Down Time [mins]	3	3
Fans off on Defrost	No	No
Cabinet Temperature Ratio (%)	50	50
Superheat [K]	5	5

NOTES! * for R22 multiply by factor X 0.90
 ** Set-up data is for guidance only. Final settings to be determined by commissioning contractor.

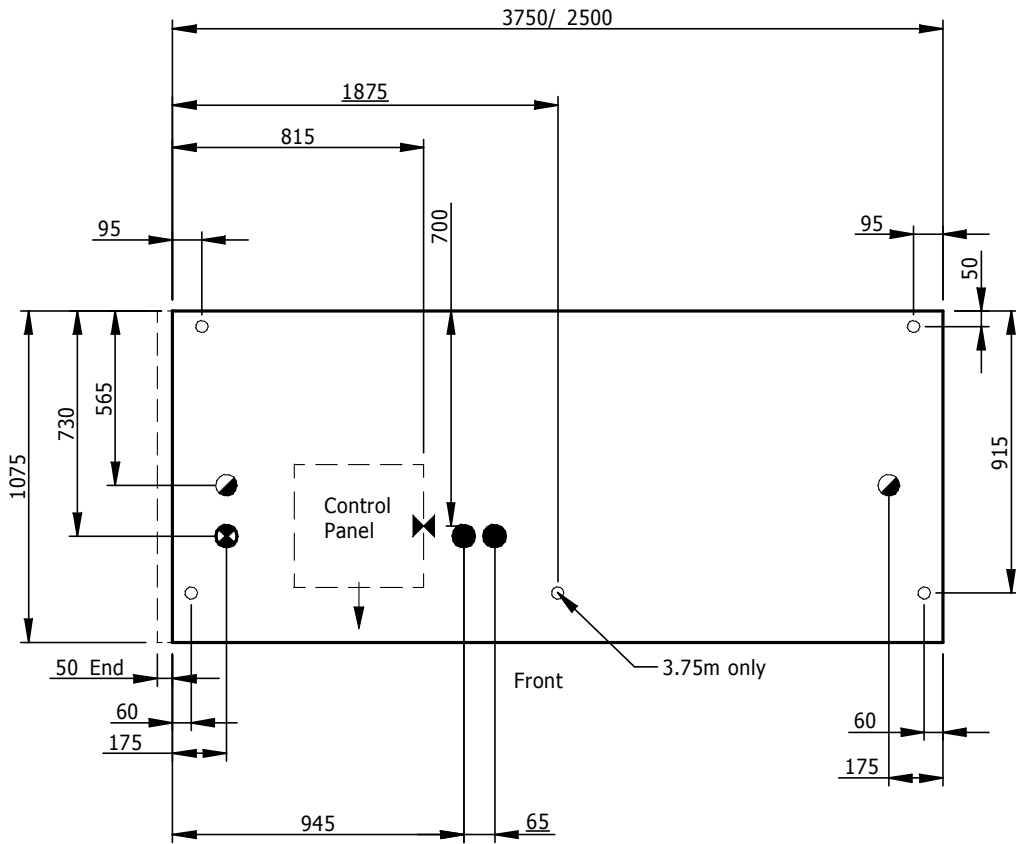
Section Drawing – WA1



Ref:- DS1011-2

Plan Drawing – WA1

- KEY
- Feet Positions
 - Refrig. Outlets
 - ◐ Drain Outlets
 - ⊗ Elect. Outlets
 - ⊗ Mains Supply

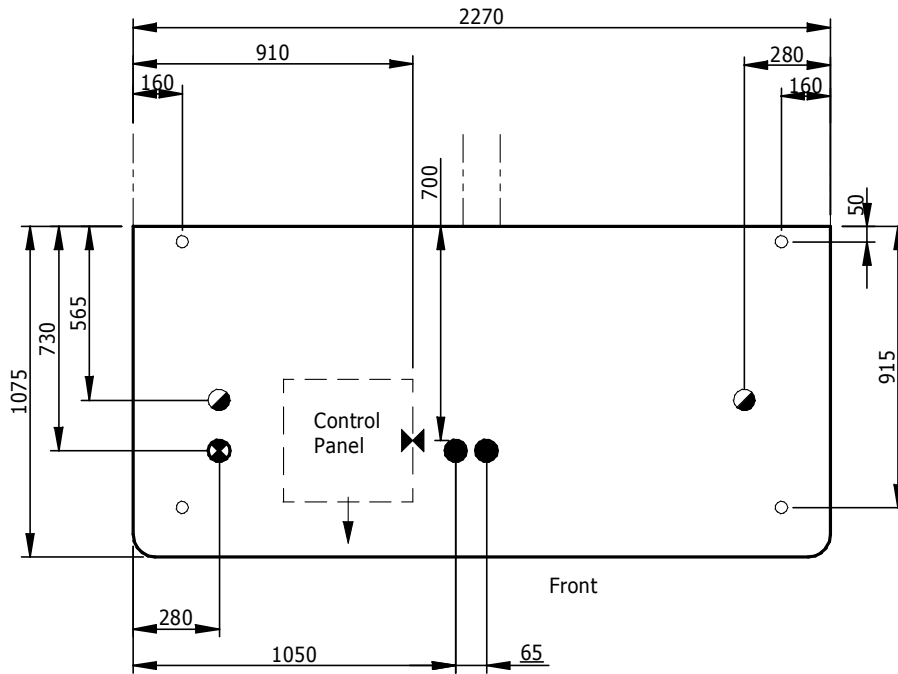


Plan of Base

Ref:- DP1011-2

Plan Drawing – WA1 WAE

- KEY
- Feet Positions
 - Refrig. Outlets
 - ◐ Drain Outlets
 - ⊗ Elect. Outlets
 - ⊗ Mains Supply



Plan of Base

Ref:- DW1011-2