



RETAIL EQUIPMENT LTD

<b>Case Type</b>	<b>Well Case</b>			
<b>Model Designation</b>	<b>WA2</b>			
<b>File Reference</b>	1039			
<b>Document Issue</b>	1	14.03.05	IRG	First Issue
	2	14.12.05	GWP	New Format
	3	10.03.05	AG	Drain Connection revised was 1 & 1/2"

cabinet **TECHNICAL DATA**

## Cabinet Technical Data Sheet – WA2 Frozen Food

Product Type	Frozen Food / 3L2
Product Temperature	-18°C
Maximum Design Ambient	

Case Length [m]	3.75	2.50	WAE
-----------------	------	------	-----

### Refrigeration Data

Refrigeration Duty (per 24hrs) [kW]	1.3	0.87	1.0
Evaporating Temperature [°C]	-34	-34	-34
Nett Environment Cooling Effect [kW]	0.9	0.6	0.66
R744a AKV Expansion Valve Size	No2	No1	No1

Evaporator Liquid Capacity @ 90% R744a\* [kg]

Refrigeration Pipe Tail – Liquid	3/8"	3/8"	3/8"
Refrigeration Pipe Tail – Suction	3/8"	3/8"	3/8"

### Electrical Data (@ 230V 50Hz)

	Watts	Amps	Watts	Amps	Watts	Amps
Defrost Heaters	2900	12.61	1930	8.39	1590	6.91
Fans	81	0.35	54	0.23	54	0.23
Trim Heaters	315	1.36	210	0.91	280	1.22
Solenoid Valve / Controller	10	0.04	10	0.04	10	0.04
Maximum Load – Electric Defrost	3306	14.4	2204	9.57	1934	8.4

### Miscellaneous Data

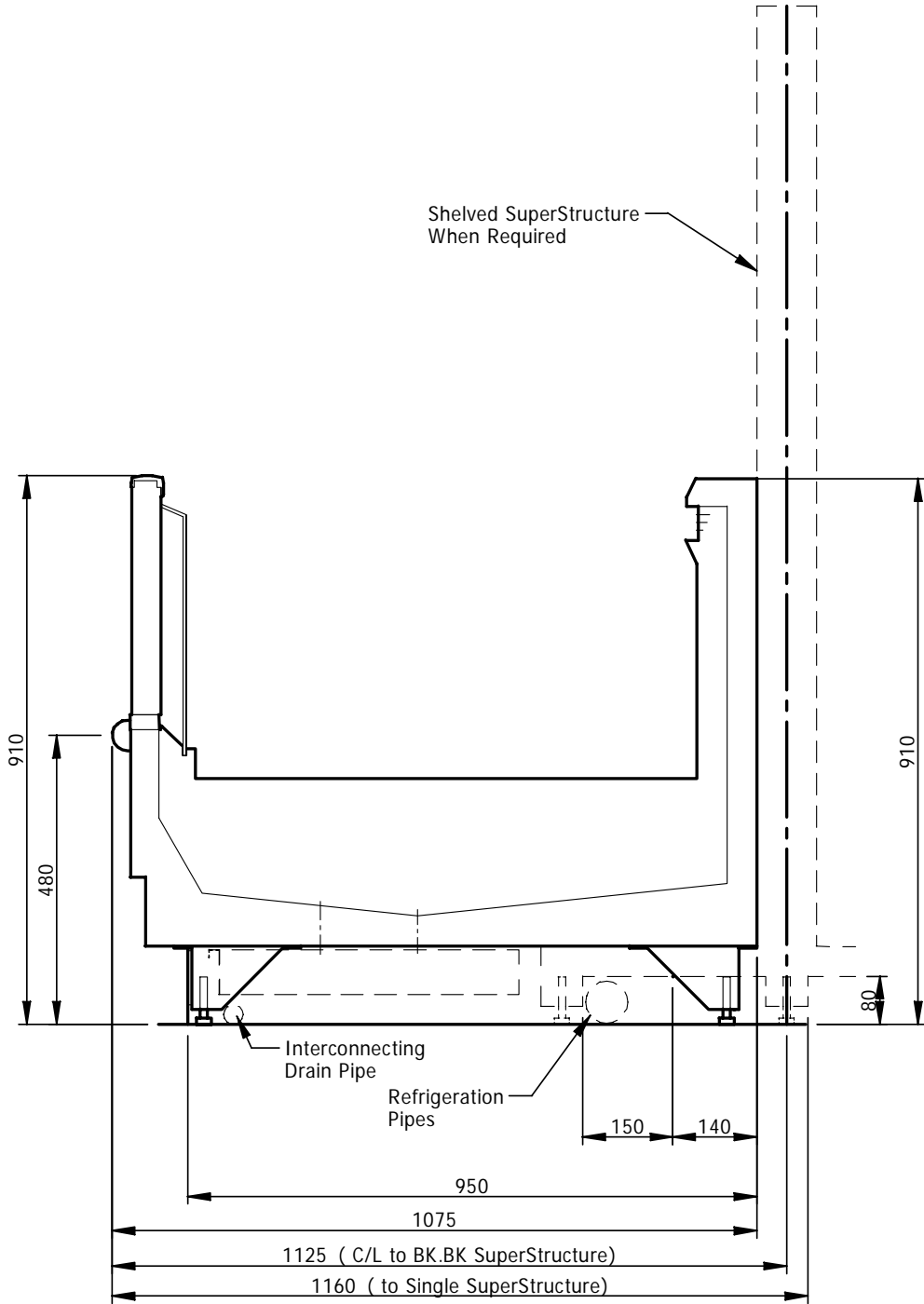
Drain Outlet	1 & 1/4" plastic x2
Refrigeration Connections	Bottom LHS
Electrical Connection	Bottom LHS

### Set-Up Data\*

	Electric Defrost
Cut in Temperature [°C]	-24
Differential [K]	2
N° Defrosts (per 24hrs)	3
Maximum Defrost Time [mins]	45
Defrost Termination Temp (air off) [°C]	8
Drain Down Time [mins]	3
Fans off on Defrost	No
Cabinet Temperature Ratio (%)	50
Superheat [K]	5

NOTES! \* for R22 multiply by factor X 0.90

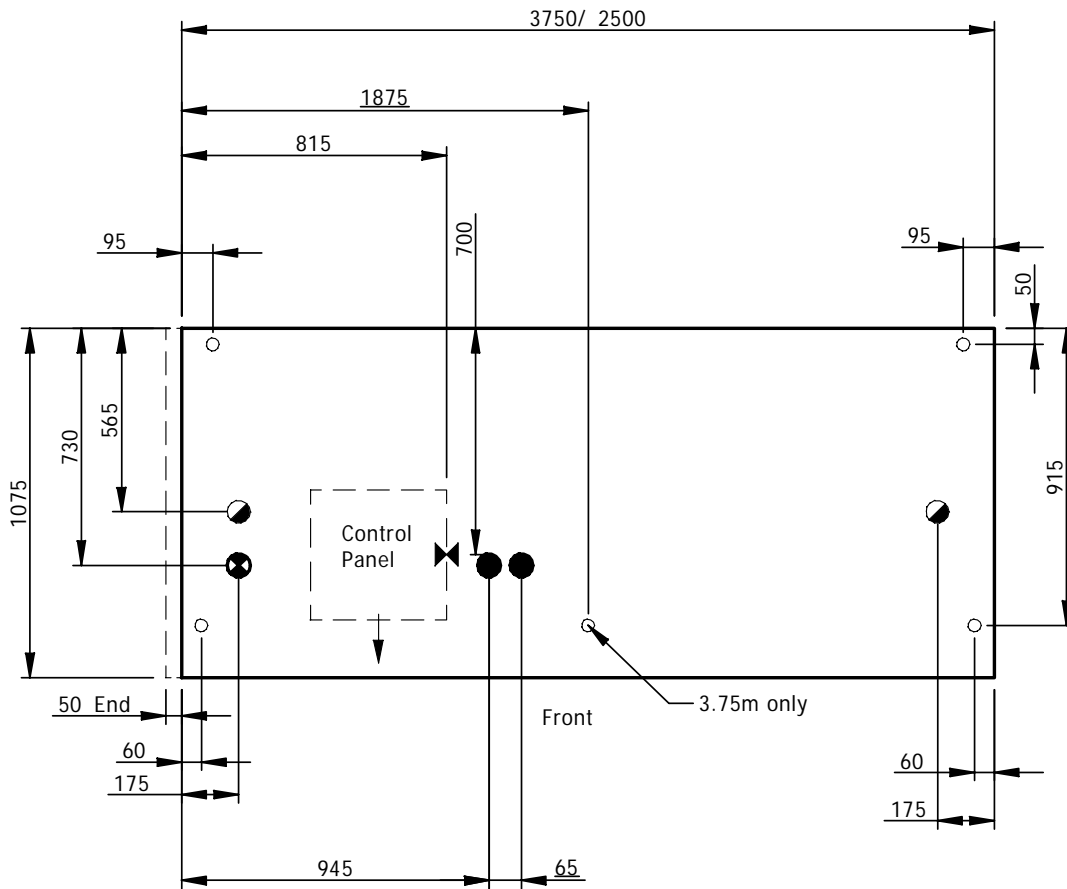
Section Drawing – WA2



Ref:- DS1039-2

Plan Drawing – WA2

- KEY
- Feet Positions
  - Refrig. Outlets
  - ◐ Drain Outlets
  - ⊗ Elect. Outlets
  - ⊗ Mains Supply



Plan of Base

Ref:- DP1039-2

