

<b>Case Type</b>	<b>Frozen Food Well Case</b>			
<b>Model Designation</b>	<b>WB9</b>			
<b>File Reference</b>	1229			
<b>Document Issue</b>	1	22.10.12	GR	First Issue
	2	21.11.12	GR	Load Increased To Suit Larger Compressor & Condensate Boil Off Tray Added

cabinet **TECHNICAL DATA**

## Cabinet Technical Data Sheet – WB9

Product Type	Frozen Food 3L1
Product Temperature	-18°C / -22°C
Maximum Design Ambient	25°C 60%RH

---

<b>Case Length [m]</b>	<b>1.775</b>
------------------------	--------------

---

### Refrigeration Data

Nett Environmental Cooling Effect	-0.42
Refrigerant Charge per System R1270	800g

### Electrical Data (individual loads 230v)

	Watts	Amps
Defrost Heaters	1590	6.9
Fans	54	0.23
Trim Heaters	280	1.22
Controller	10	0.04
Condensing unit	1365	5.93
Condensate Tray	300	1.3

### Electrical Data (@230V 1ph 50Hz)

Maximum Load – Electric Defrost	2234	9.71
Maximum Load - Normal Running	2009	8.73

### Miscellaneous Data

Drain Outlet	32mm Plastic
Condensate Waste	Self Evaporative
Electrical Connections	Underside of Cabinet RHS – 16A Commando With 3M Lead

### Set-Up Data\*\*

	Frozen
Cut in Temperature [°C]	-24
Differential [K]	2
Cabinet Temperature Ratio (%)	50
Anti Cycle Time [Seconds]	180
Lag Comp Delay [Seconds]	0
N° Defrosts (per 24hrs)	2
Maximum Defrost Time [mins]	45
Defrost Termination Temp (air off) [°C]	4
Drain Down Time [mins]	2
Fans in Defrost	On
Integral Control	Basic

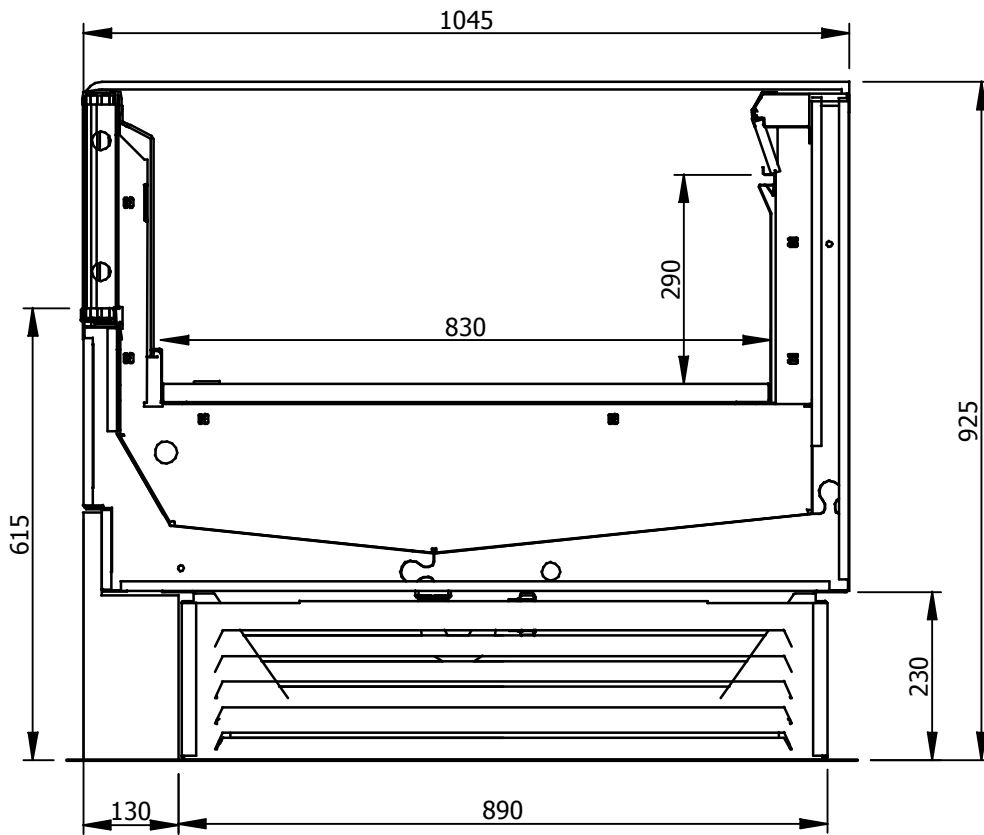
*NOTES! \* 12/12 Trading Conditions*

*\*\* Set-up data is for guidance only. Final settings to be determined by commissioning contractor.*

*\*\*\* Flow rate for Glycol based on 30% @ 20°C from ASHRAE = 3.848 KJ/(KG-K)*

*\*\*\*\* Flow rate for water @ 20°C ([http://www.engineeringtoolbox.com/water-thermal-properties-d\\_162.html](http://www.engineeringtoolbox.com/water-thermal-properties-d_162.html))*

**Section Drawing – WB9**

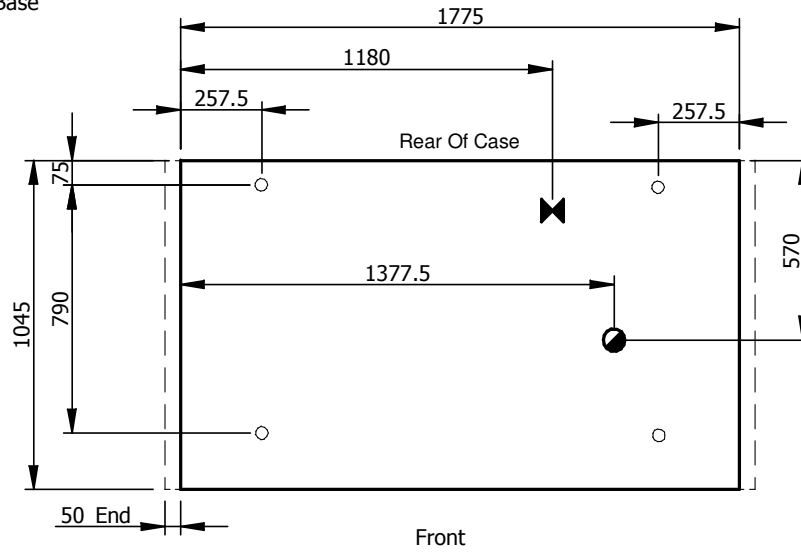


Ref:- DS1229

**Plan Drawing – WB9**

- KEY
- Feet Positions
  - Refrig. Outlets
  - ◐ Drain Outlets
  - ⊗ Elect. Outlets
  - ⊗ Mains Supply

Plan of Base



Ref:- DP1229